



2026 Prince George City Nature Challenge Keyoh Whuti Whuchun Lhch'ahuldeh *

Presentation to RFFFG Directors

March 19, 2026

Barry Booth, RP Bio

Saphida Migabo, Senior Lab Instructor, UNBC



* Big village and its trees that surpass/compete with one another. Translation by Bill Poser, Lheidli T'enneh



What is the City Nature Challenge?



Long-toed salamander natal pond
<https://inaturalist.ca/observations/298267746>

- It is an international effort that encourages people take photos or record sounds of nature and help fight biodiversity loss
- Each observation is a data point that helps scientists and researchers understand and protect nature for all of us
- It is organized globally by the California Academy of Sciences and the Natural History Museum of Los Angeles County
- Started with 2 cities in California in 2016 and has grown to 669 cities in 63 countries.
- In 2025, there were over 3 million observations recorded by 102,000 observers.

Current City Participants for the 2026 Challenge



Current City Participants for the 2026 Challenge North America




Current City Participants for the 2026 Challenge North America





About

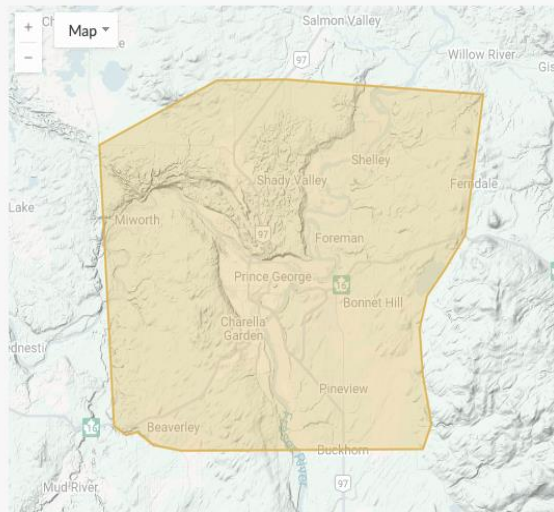
Members  2

Welcome to the inaugural City Nature Challenge: Prince George and Surrounding areas! Join us for four days of collaborative exploration as we document and identify as many wild organisms as we can. Be part of a global community coming together to showcase our planet's incredible biodiversity.

[Read More >](#)

 [Project Journal](#)

Map



The City Nature Challenge is an iNaturalist 'Project':
<https://www.inaturalist.org/projects/prince-george-bc-canada>

All projects have a geographic boundary

We have included area outside of the City Limits as there are a lot of people in the Prince George area that live in 'rural' settings

A lot of the region's high biodiversity areas are in rural settings

RDFFG: parts of Areas A, C, D, E, F



2026 Prince George

City Nature Challenge

Keyoh Whuti Whuchun Lhch'ahuldeh

Benefits of the CNC

Engagement: providing an avenue for citizens to become engaged in the world around them.

Numerous documented mental health benefits of getting people outside by connecting them to nature, as well as building community.

Data: contributing to biodiversity knowledge, especially of understudied groups such as insects and fungi.

Potentially informing local government practices and policies.



Skwala stonefly © B.Booth



2026 Prince George

City Nature Challenge

Keyoh Whuti Whuchun Lhch'ahuldeh

Who we are currently working with?

UNBC

Saphida (FE) students and FE faculty

Hart Banack (EDUC): teacher candidates
and SD 57 staff and students including the
Indigenous Education Program

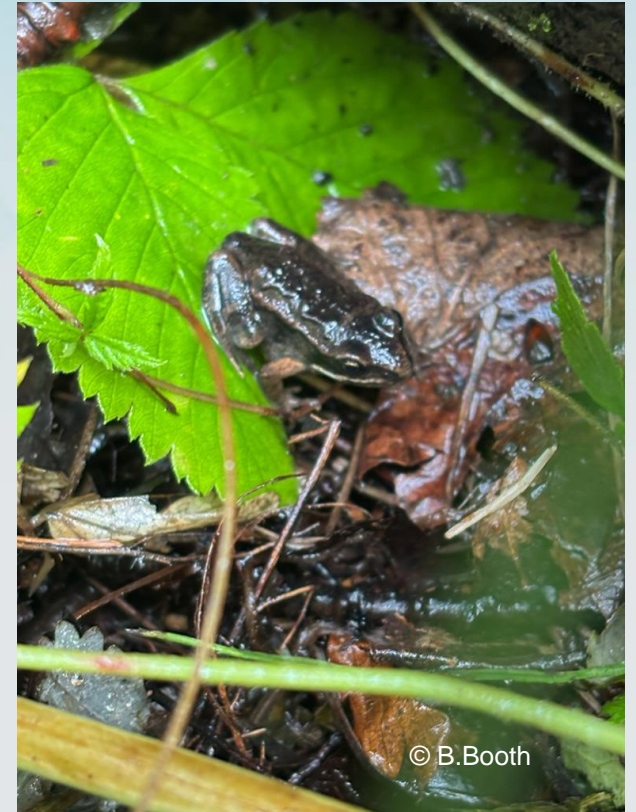
Lheidli T'enneh

Prince George Naturalists

The City of Prince George

Northern Health (Climate Change & Health)

Regional District of Fraser-Fort George???



Wood Frog

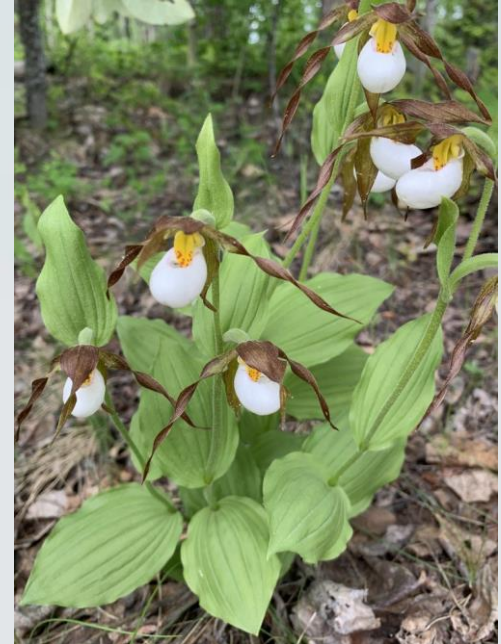
<https://inaturalist.ca/observations/307110047>



**2026 Prince George
City Nature Challenge
Keyoh Whuti Whuchun Lhch'ahuldeh**

Important Dates:

- Making observations: April 24-27
- Identifying and uploading: April 28- May 10
- Results announced: May 13



Mountain Lady Slipper

<https://www.inaturalist.org/observations/48435919>

Community Events



Fly Agaric

<https://www.inaturalist.org/observations/38783175>

To be announced in
early April!



Night Crawler

<https://www.inaturalist.org/observations/321755010>

Our ask of the RDFFG

Promotion of event:

- on RDFFG website other social media platforms?
- Share out through Area Directors?
- Staff involvement (Parks)?



Bohemian waxwings

<https://inaturalist.ca/observations/325788198>

Relevant sites/links

- CNC main page: <https://www.citynaturechallenge.org/>
- CNC Prince George: <https://www.inaturalist.org/projects/city-nature-challenge-2026-prince-george-bc-canada>
- iNaturalist: <https://www.inaturalist.org/>
- Contact information
 - Barry Booth: boothb@telus.net, 250-961-1238
 - Saphida Migabo: saphida.migabo@unbc.ca