



Willox Creek, BC, July 2020

Collaborative Disaster Risk Reduction & Climate Adaptation:

Regional District of Fraser Fort George Board Presentation

Presented by:

Kris Holm (BGC)

Kim Menounos (Fraser Basin Council)

Date:

February 22, 2024

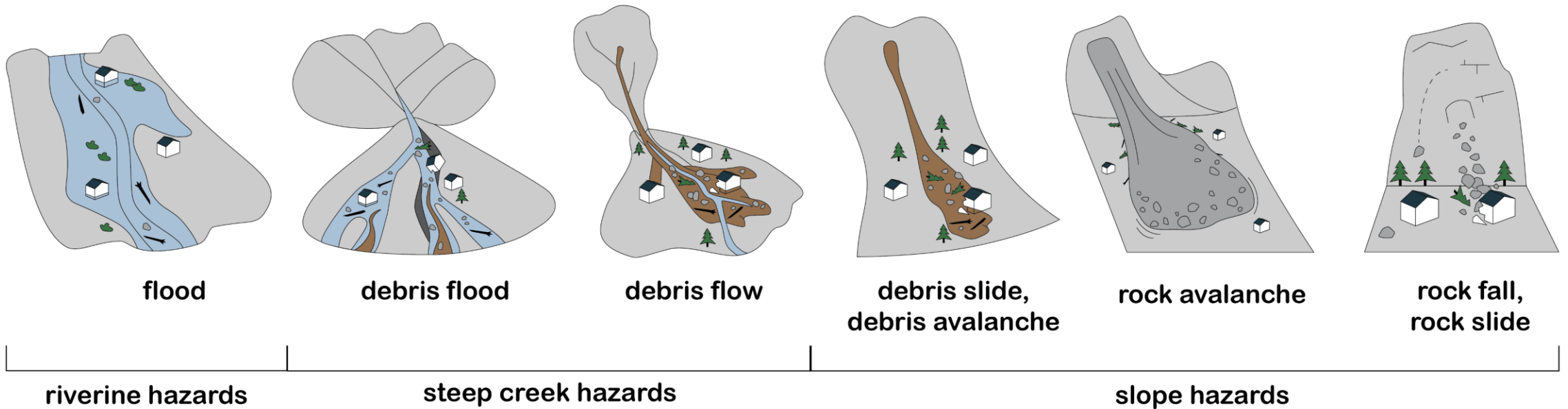


B.C. has enacted a new Emergency and Disaster Management Act.

- **Provincial responsibilities** for emergency management organization.
- **Local responsibilities** for risk management.
- **Private sector responsibilities** for critical infrastructure risk management.
- **Requirements to consider Indigenous knowledge** in cooperation with Indigenous governing bodies.



The Collaborative Disaster Risk Reduction & Climate Adaptation Project supports planning and emergency management decisions through District-wide screening of geohazard risk.



Project partners include the RDFFG, all four municipalities in the District, the Lheidli T'enneh First Nation, and the McLeod Lake Indian Band.

Project Partners

Lheidli T'enneh First Nation, McLeod Lake Indian Band, Village of Valemount, Village of McBride, District of Mackenzie, City of Prince George, RDFFG (lead).

Project Advisory Committee

Provincial (MoTI, WLRS, EMCR)
and Project Partner Representation

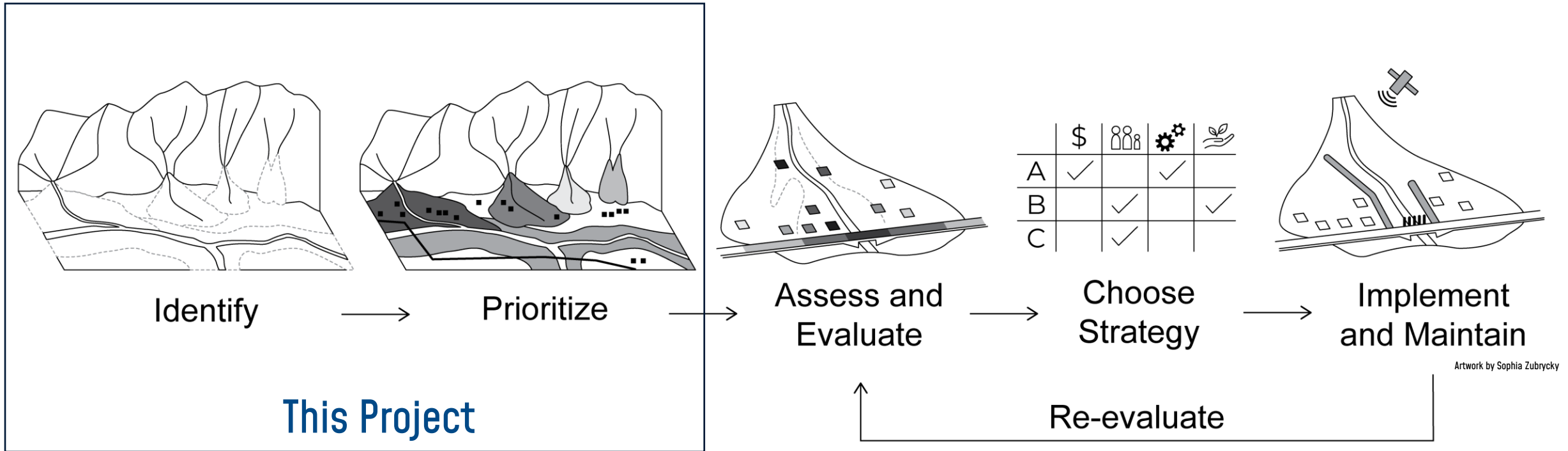
Project Coordinator

Fraser Basin Council
(Kim Menounos, Terry Robert)

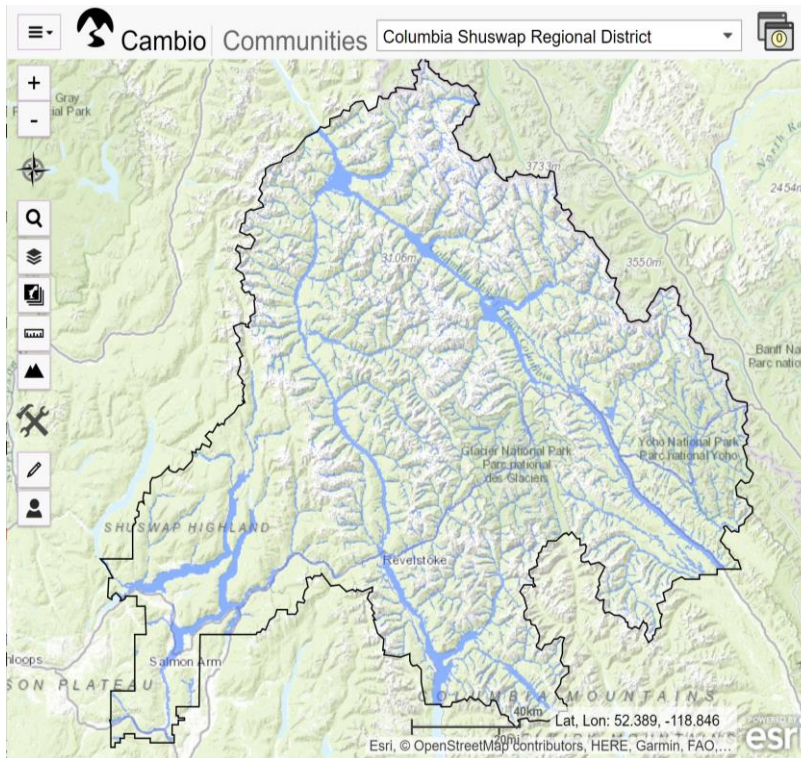
Professional Services

BGC Engineering
(Kris Holm, Project Lead &
BGC technical team)

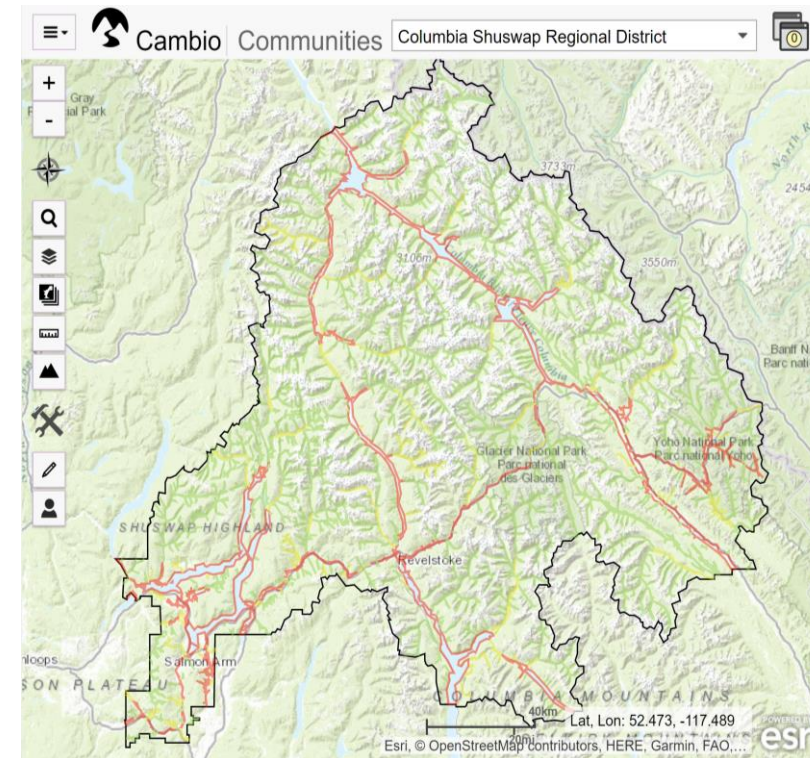
Geohazard risk management advances in steps.



The regional assessment start by identifying 'hot spots' where hazard inventories intersect valued assets.



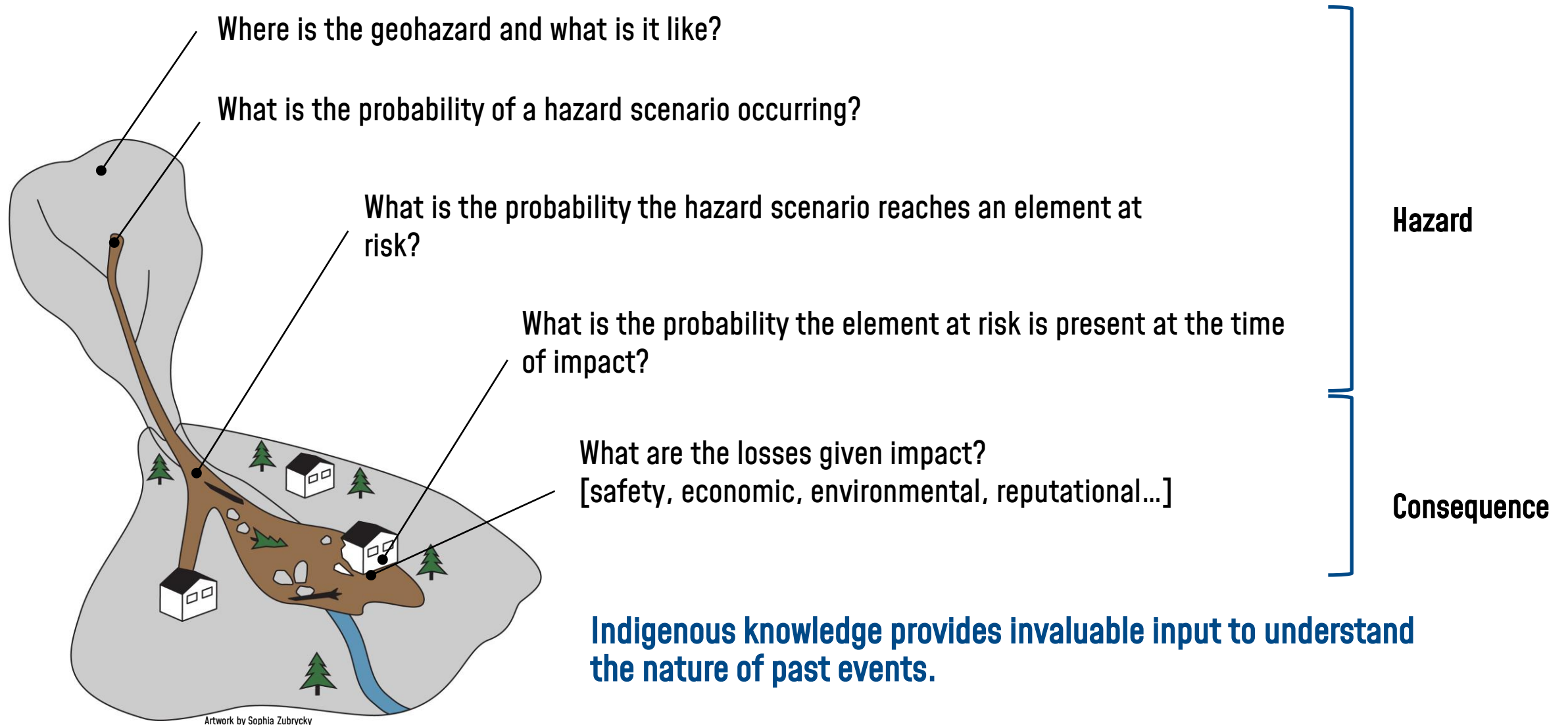
Hazard



Hazard Threat (population, buildings & infrastructure)

(Previous Project Example: CSRD, Clear-water Floods)

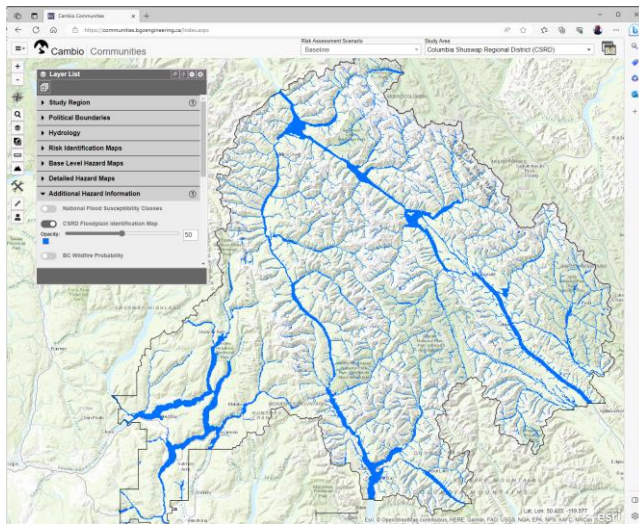
We estimate risk at screening level by addressing a series of questions:



Three mapping types or “Tiers” used to define hazard extents

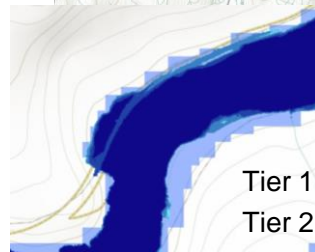
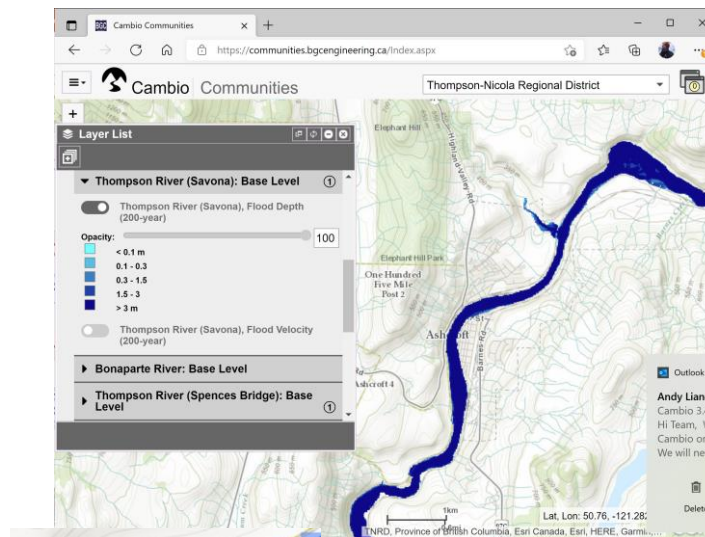
Tier 1

Hazard Identification
Floods, Steep Creeks and
Landslides (entire District)



Tier 2

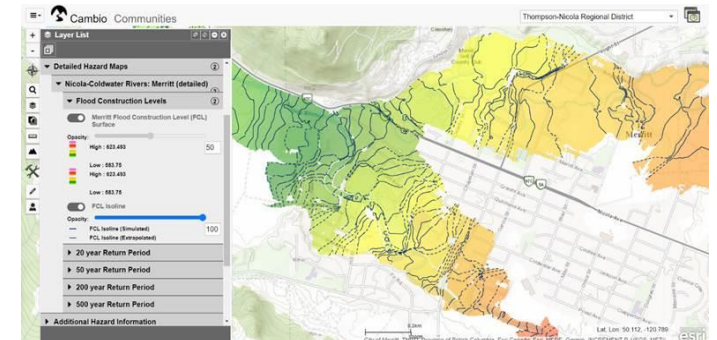
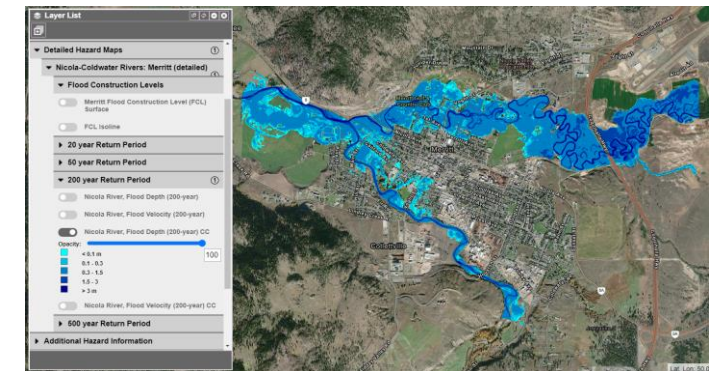
Base Level Hazard Mapping
Flood Hazards (Select Areas)



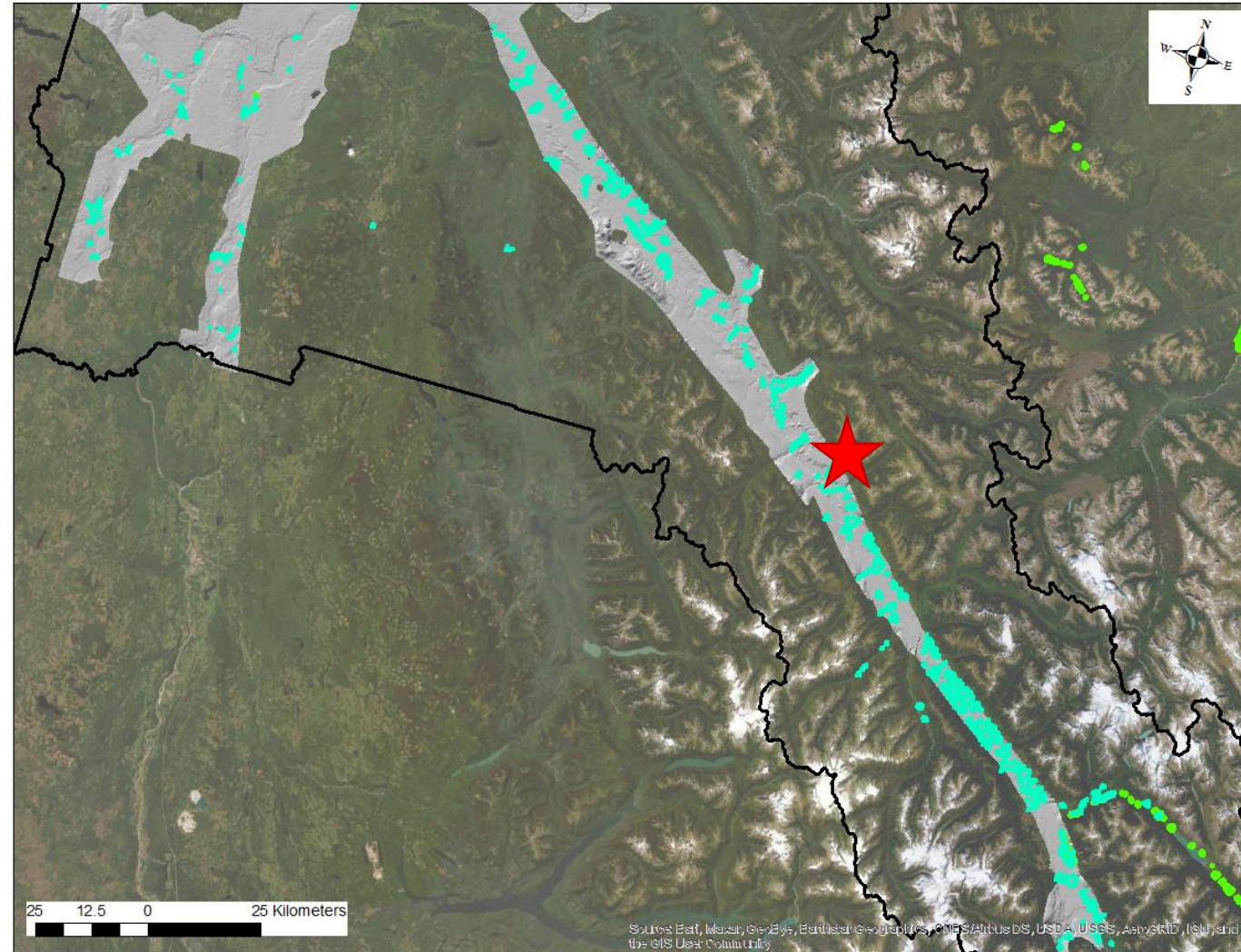
Tier 1 (light blue)
Tier 2 (dark blue)

Tier 3

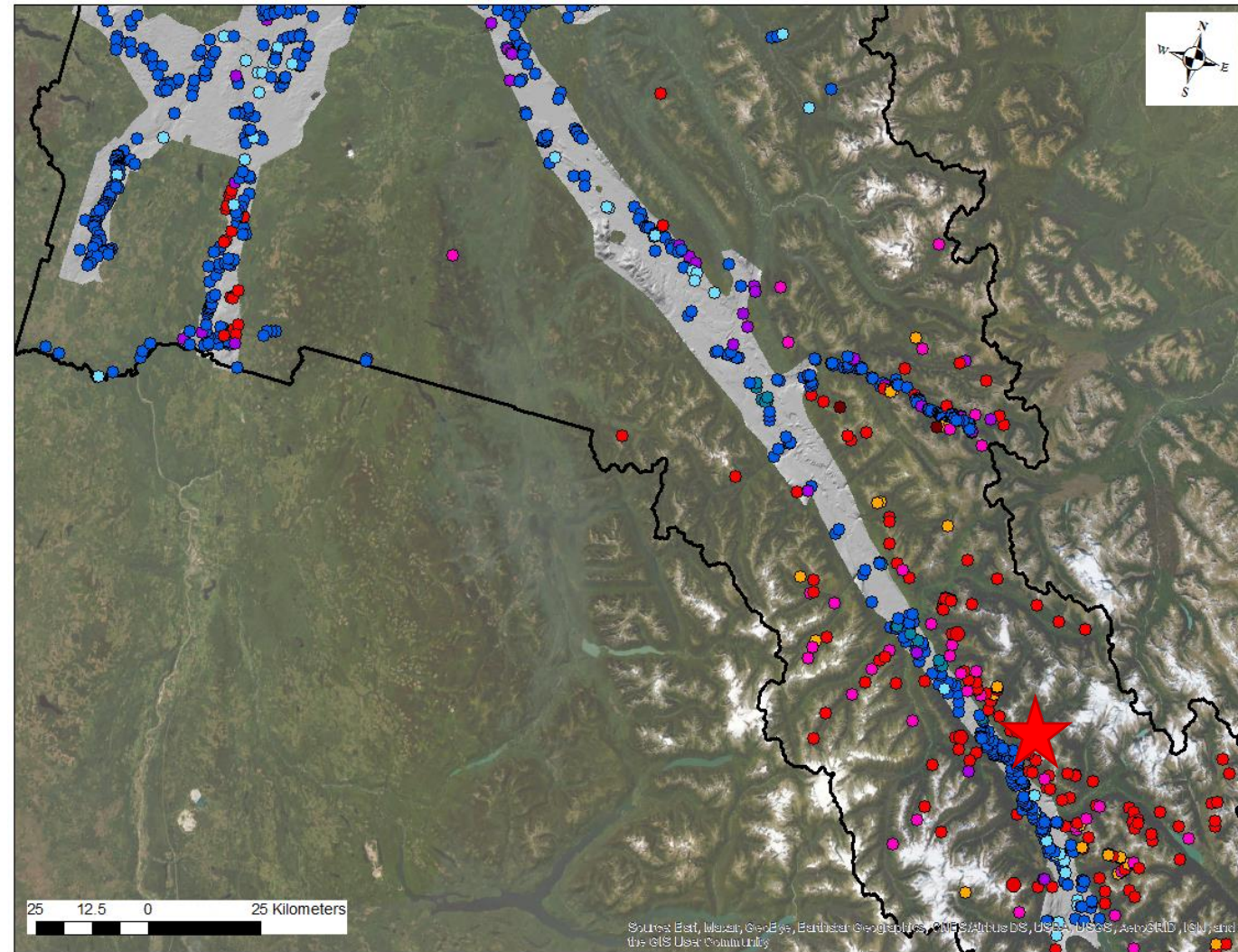
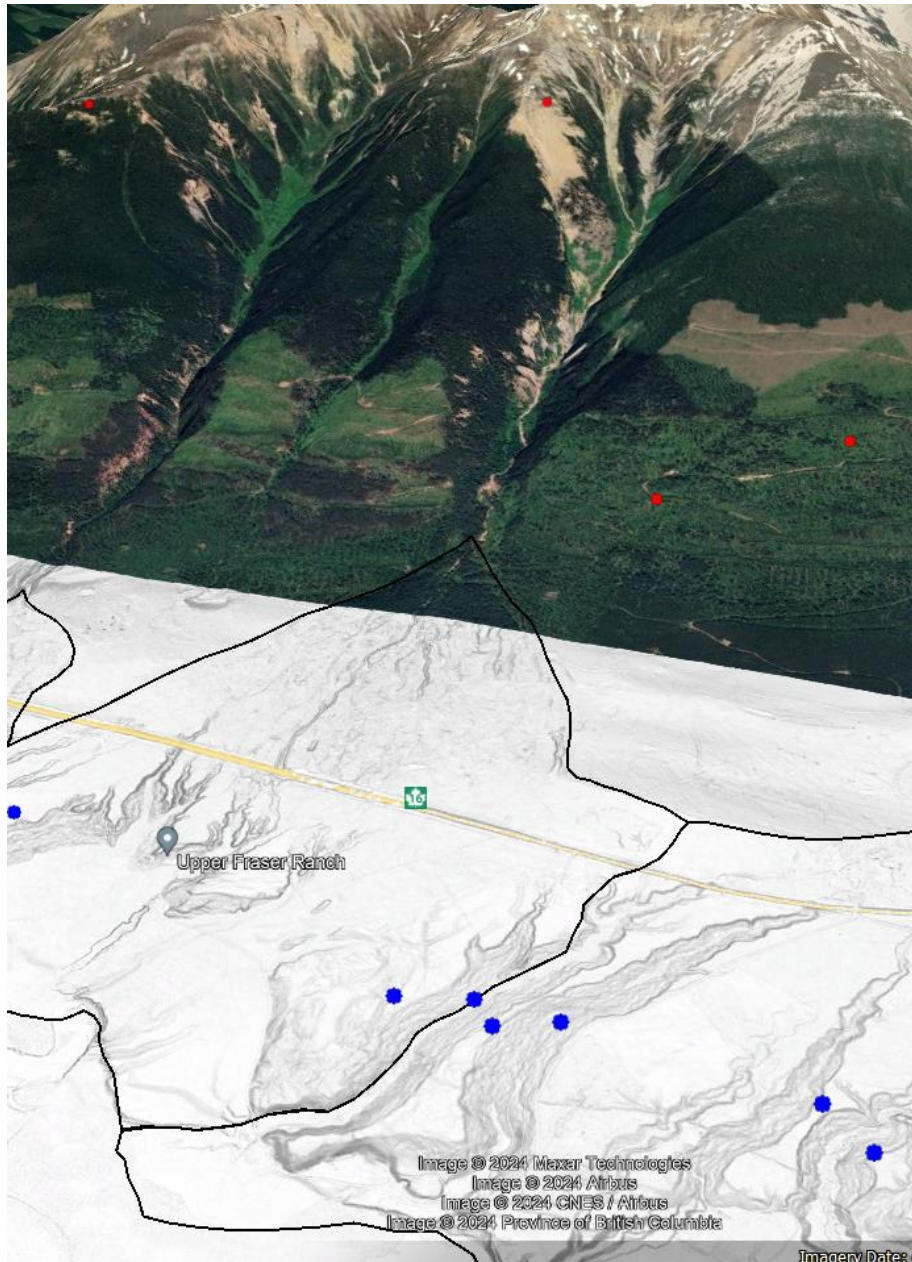
Detailed Hazard Mapping
(not this Study)



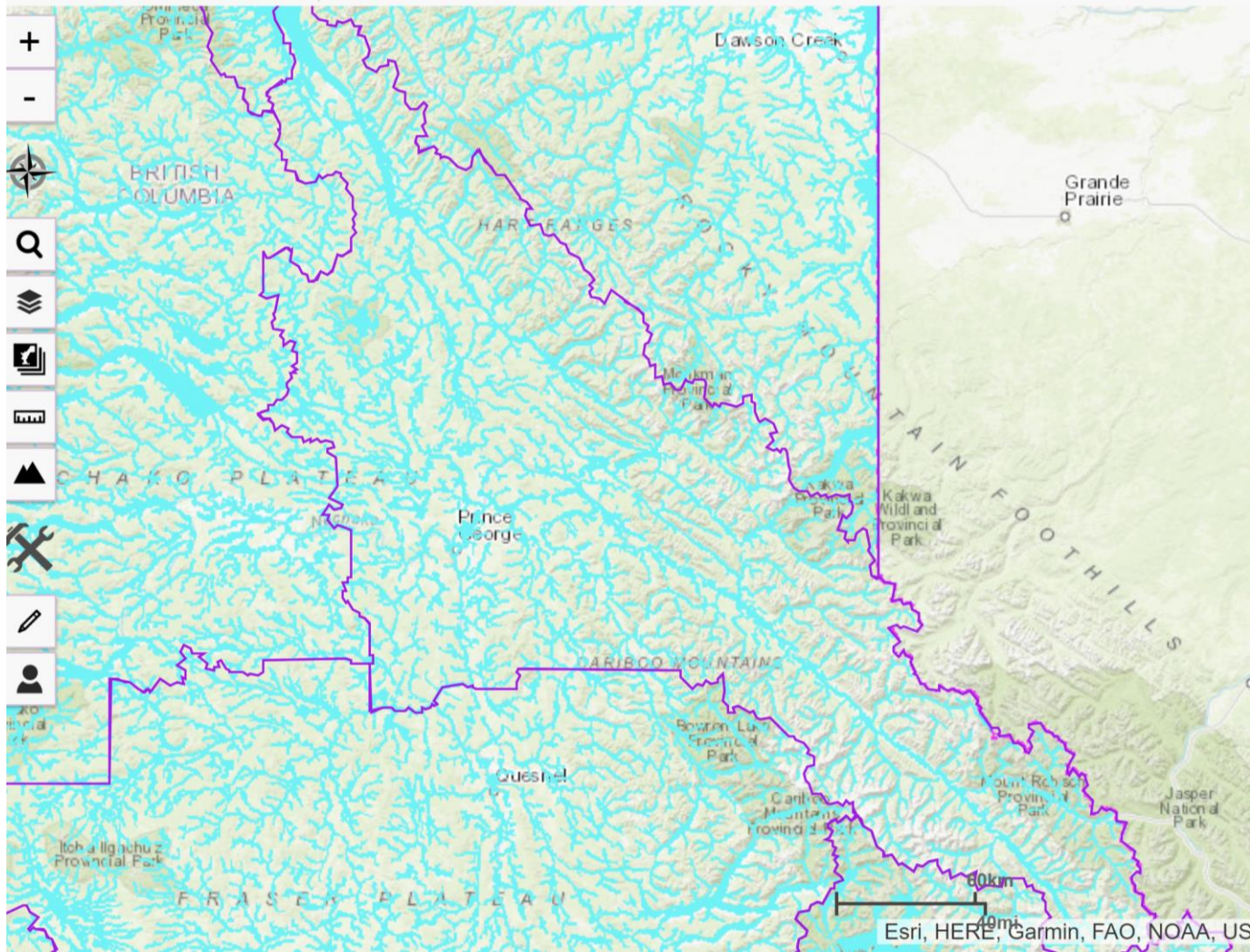
“Tier 1” Steep creek mapping: 310 fan features



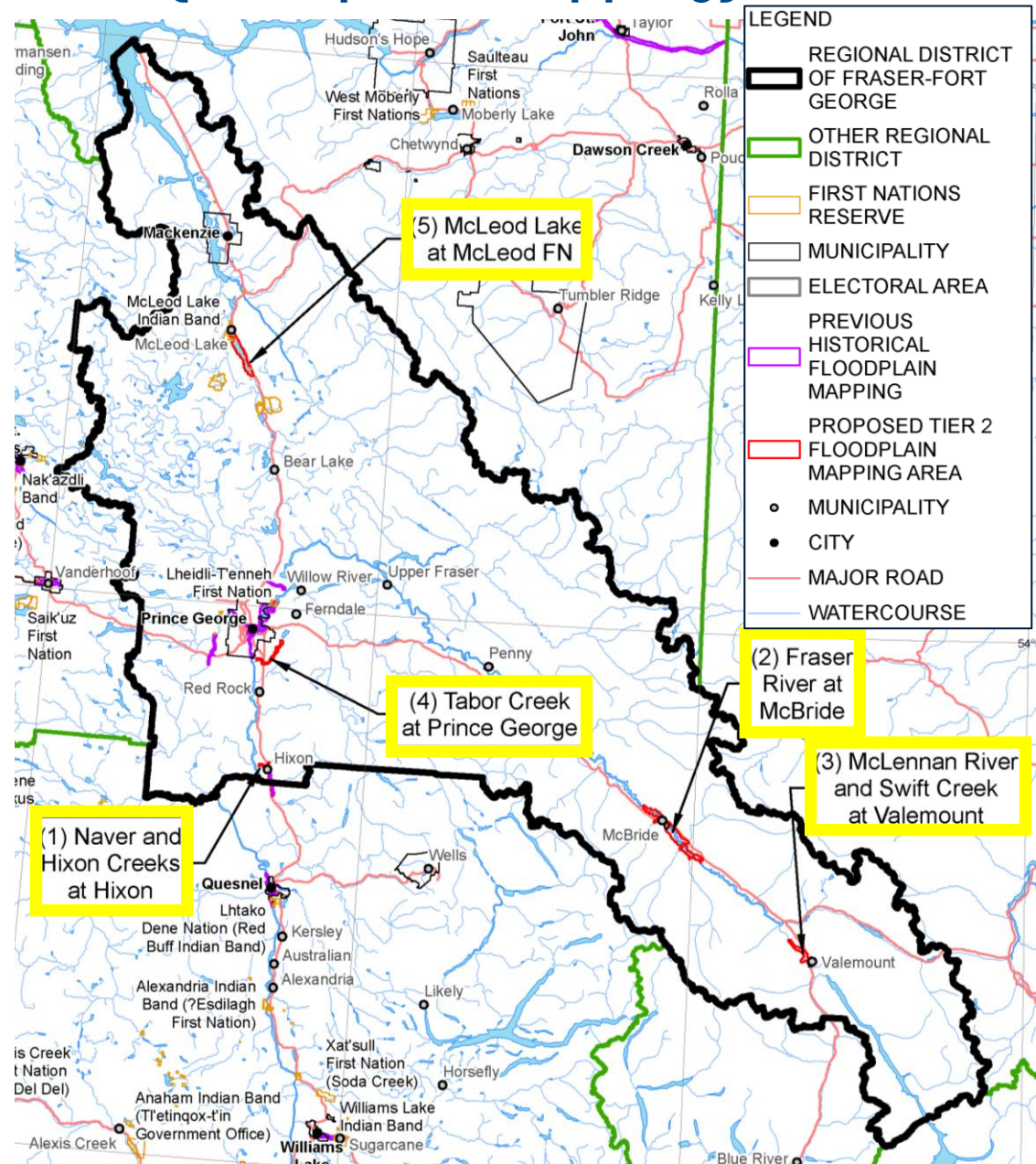
“Tier 1” Landslide mapping: 1,100 landslide features



Tier 1 (Floodplain Identification)



Tier 2 (Floodplain Mapping)



Project Timeline

SEPTEMBER - DECEMBER 2023

Data gathering
Advisory and Partner meetings
Website launch

JANUARY - MARCH 2024

Advisory and Partner meetings
RDFFG Board presentation
Indigenous & Local gov't engagement
Hazard inventory ongoing

APRIL - JUNE 2024

Indigenous & Local gov't engagement
Draft hazard & asset inventories
Draft hazard mapping

JULY-AUGUST 2024

Advisory meeting
Fieldwork (BGC)
Partner meetings (in field)
Post-field mapping update

SEPTEMBER- NOVEMBER 2024

Completion of hazard mapping
Regional Risk Estimation complete
Advisory & Partner meetings
Data sharing agreements with First Nations

JANUARY - MARCH 2025

Draft Report & Data for review
Council presentations
Indigenous government
engagement Press release

APRIL - MAY 2025

Report feedback review

JULY 2025

Final Assessment Report
Press release
Community presentations

Thank you!

Fraser River at McBride, BC, July 2021

Closing

This presentation required a number of complex issues to be reduced to general concepts in a series of concise bullet points, photographs, and/or diagrams. The content of this presentation is not intended for design decisions or construction. This presentation is for general informational purposes only. BGC Engineering Inc.'s report(s) may contain more specific details concerning the issues identified in this presentation. Please consult BGC for further clarification if you have any questions or concerns.

Prepared by:

Kris Holm, M.Sc., P.Geo.

Client:

Fraser Basin Council

Reviewed by:

Elisa Scordo, M.Sc., P.Ag., P.Geo.
Marc-André Brideau, Ph.D., P.Geo.

Date:

February 12, 2024

Contact us

Kris Holm (BGC)

Principal Geoscientist | BGC Engineering Inc.

kholm@bgcengineering.ca | 778-558-4892

Kim Menounos (Fraser Basin Council)

Manager, Northern Interior Region | Fraser Basin Council (she/her)

KMenounos@fraserbasin.ca | 250-617-4821



Project Deliverables

- Assessment Report
- Maps (provided as GIS data and Cambio web application)
- Risk Register with tabulated results for all hazard areas
- Community presentations