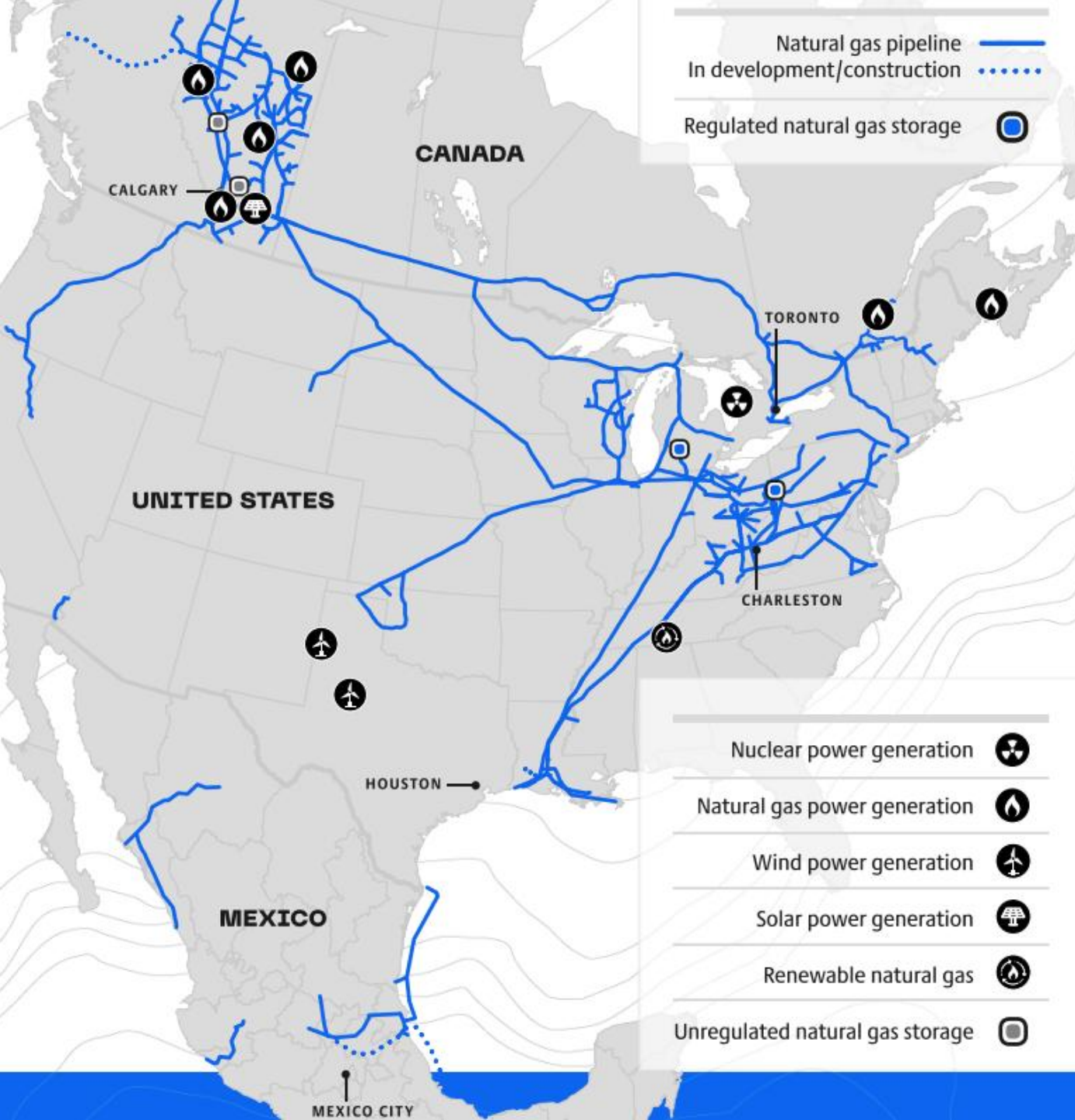




# Coastal GasLink Update: Regional District of Fraser-Fort George

Presented by: Tamara Trevelyan, Community Relations Project Advisor  
July 17, 2025

**Coastal GasLink**

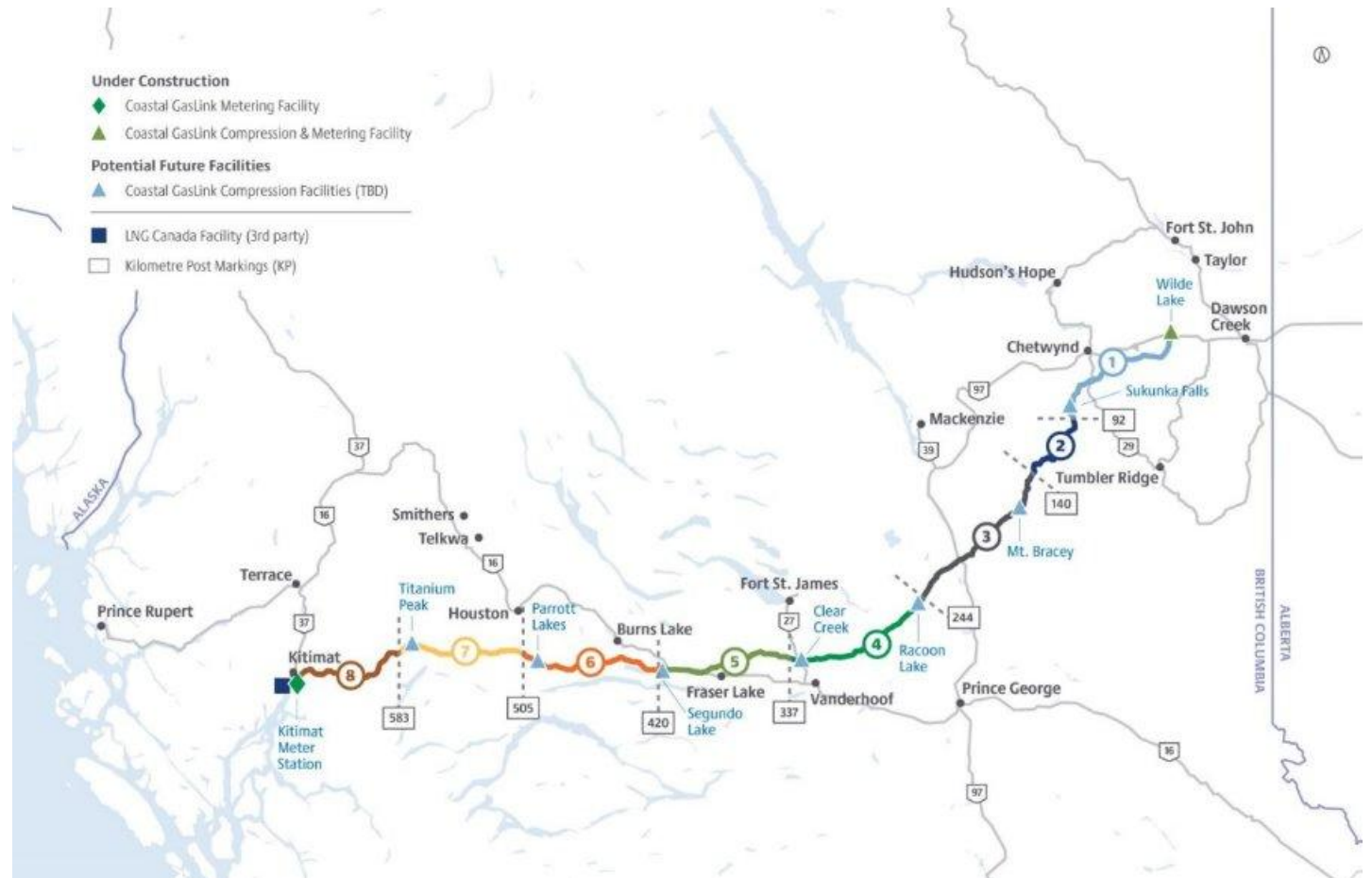


## About TC Energy

- One of North America's largest natural gas pipeline operators
- Canada's largest private-sector power generator
- 50 years in B.C.
- Offices in B.C.
  - Vancouver
  - Prince George
  - Fort St. John
  - Cranbrook

# Project Overview

- 670-kilometres in length, spanning from northeastern B.C. to Kitimat
- Approved initial capacity of 2.1 billion cubic feet per day, with potential future capacity of 5 billion cubic feet per day.



# Activity Update

Coastal GasLink

# Coastal GasLink – 2025 Post-Construction Update



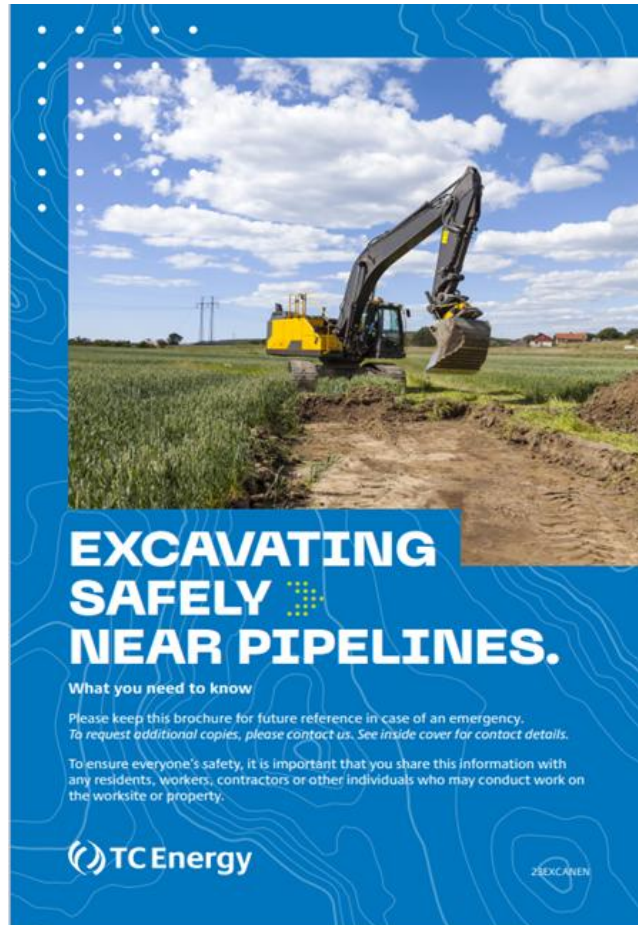


# Coastal GasLink – Operations

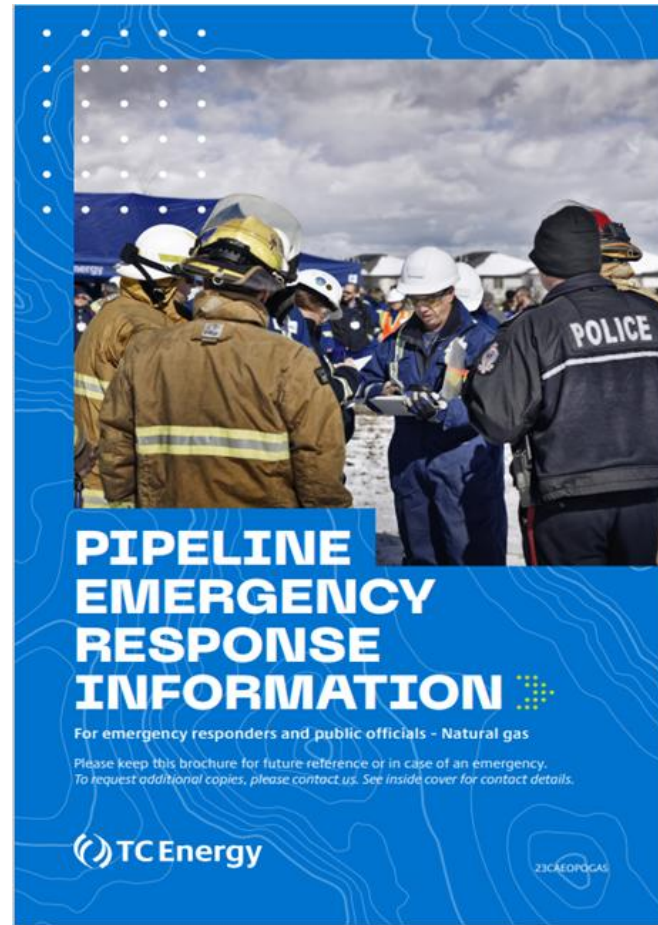
- Preservation checks have been occurring monthly, each site is visited and checked thoroughly
  - Successful turbine and compressor runs at our Wilde Lake facility
  - Valve Maintenance across the line, full service on each valve, including full grease and seal ability testing
- Installed signage and stickers at all sites including down the Right-of-Way
- Damage prevention, ensuring that all BC 1 Call's are responded to within 48 hours
- Introduction of gas to the LNG Canada facility in late August completing the final portion of pipe fill
- LNG Canada has now begun their commissioning phase, and we are working closely with Joint Venture Partners to keep the line topped up to operating pressures



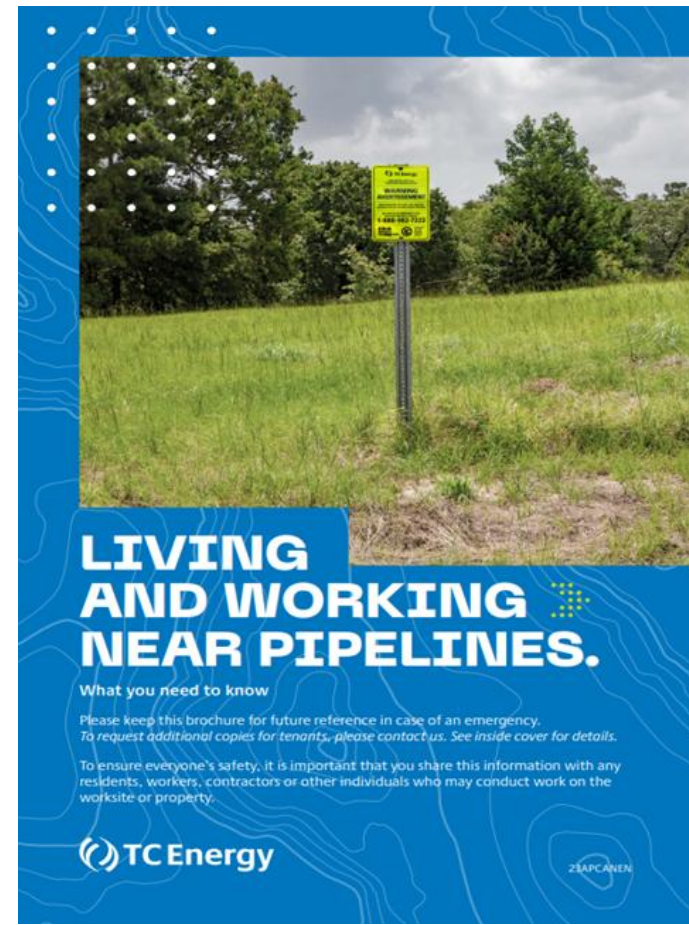
# Public Awareness



Excavators and farmers



Emergency and public officials



Affected public

# Crossing the pipeline right-of-way during an emergency:

---

TC Energy's  
Emergency #:  
1-888-982-7222

BC One-Call  
1-800-474-6886  
[www.bc1c.ca](http://www.bc1c.ca)

1. Call **TC Energy's emergency number** and describe the situation.
2. Then, call the **local One Call Centre** to request an "emergency locate"

These calls are essential because they allow TC Energy to initiate the evaluation of the situation to ensure pipe integrity.

If during an emergency, you are unable to contact TC Energy or a One Call Centre, you must call TC Energy's emergency number within 24 hours to report the crossing.





**TC Energy**

Operated by / Opéré par  
TransCanada PipeLines Limited

# **WARNING AVERTISSEMENT**

HIGH PRESSURE NATURAL GAS PIPELINE  
GAZODUC DE GAZ NATUREL HAUTE PRESSION

IN CASE OF AN EMERGENCY CALL  
EN CAS D'URGENCE APPELEZ  
**1-888-982-7222**

**Click  
Before  
YouDig.com**



Call before  
you dig.  
Appelez  
avant de  
creuser.

## Pipeline Markers

Pipeline markers contain:

- Pipeline Operator's name
- Pipeline Operator's emergency telephone number
- Product being transported



Warning sign



Line marker



Vent marker



Aerial marker



# What matters to you, matters to us.



Apply for funding to help meet your community needs.  
We support local and regional non-profit organizations  
through grants and in-kind donations with a focus on Safety,  
Education, Environment and Resilient Communities.

**Apply Today!**

► [TCEnergy.com/BuildStrong](https://TCEnergy.com/BuildStrong)



# Mount Bracey and Cedar Link

Coastal GasLink



# What is a compressor station?

---

- As natural gas flows along a pipeline, it slows due to friction, resulting in a drop in pressure.
- To keep the gas flowing at a desired flow rate, it is re-pressurized at locations along the pipeline.
- Gas is mechanically compressed at compressor stations connected to the pipeline.





# Cedar Link Project and Mount Bracey Compressor Station

## Facility overview

The Coastal GasLink project includes the construction and operation of facilities that support the 670-kilometre pipeline to deliver clean Canadian natural gas to liquefied natural gas (LNG) facilities in Kitimat, BC. Construction of compressor and meter facilities near the Dawson Creek area (Wilde Lake) and a meter facility near Kitimat (Kitimat Meter Station) has progressed to move 2.1 billion cubic feet per day (bcf/d) of natural gas.

The Coastal GasLink project has the potential to move up to 5 bcf/d with the addition of compression facilities, including the Mount Bracey Compressor Station, along the pipeline as contemplated within Coastal GasLink's approved Environmental Assessment Certificate (EAC).



# Cedar Link Project and Mount Bracey Compressor Station

---



# Phase 2 Update

**Coastal GasLink**

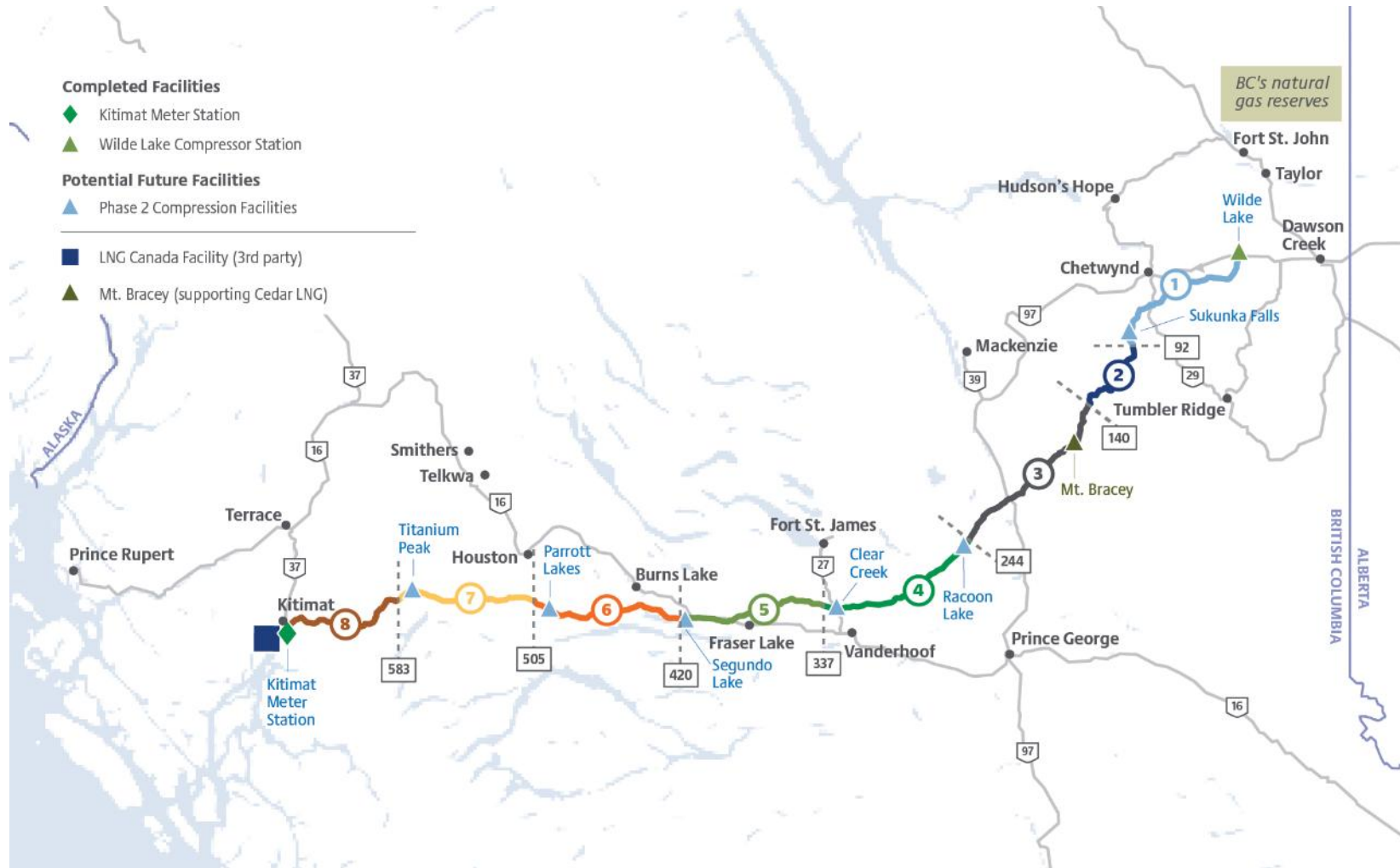


## Phase 2 – Potential Additional Compressor Stations

If approved, Phase 2 of Coastal GasLink would involve the construction and operation of:

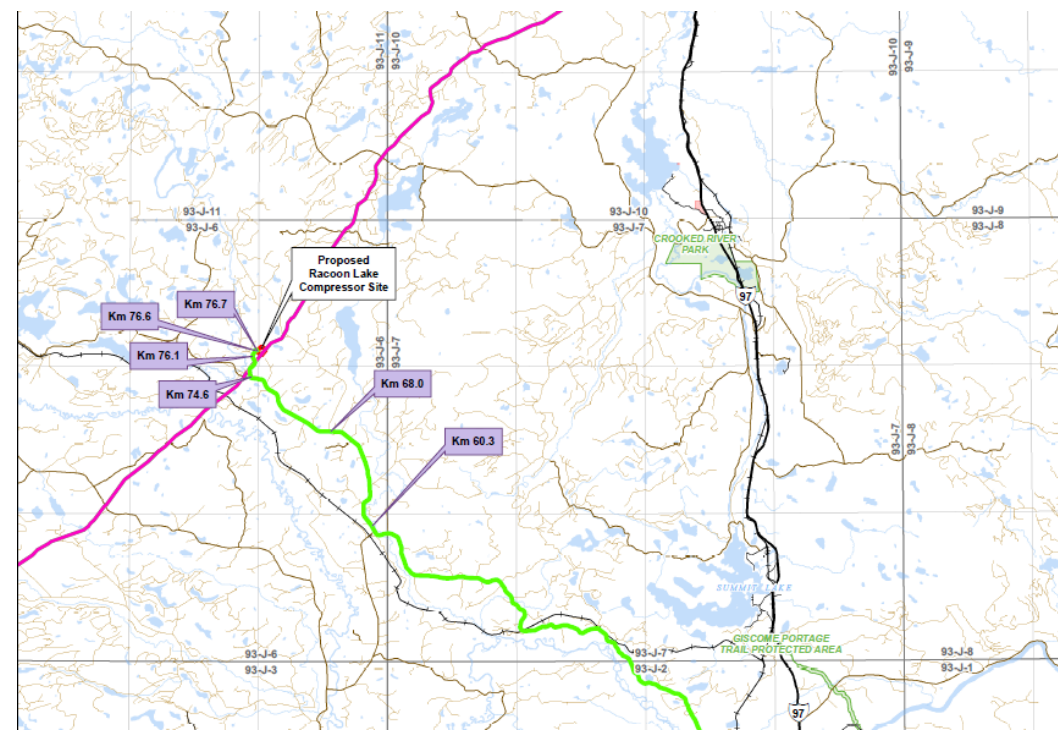
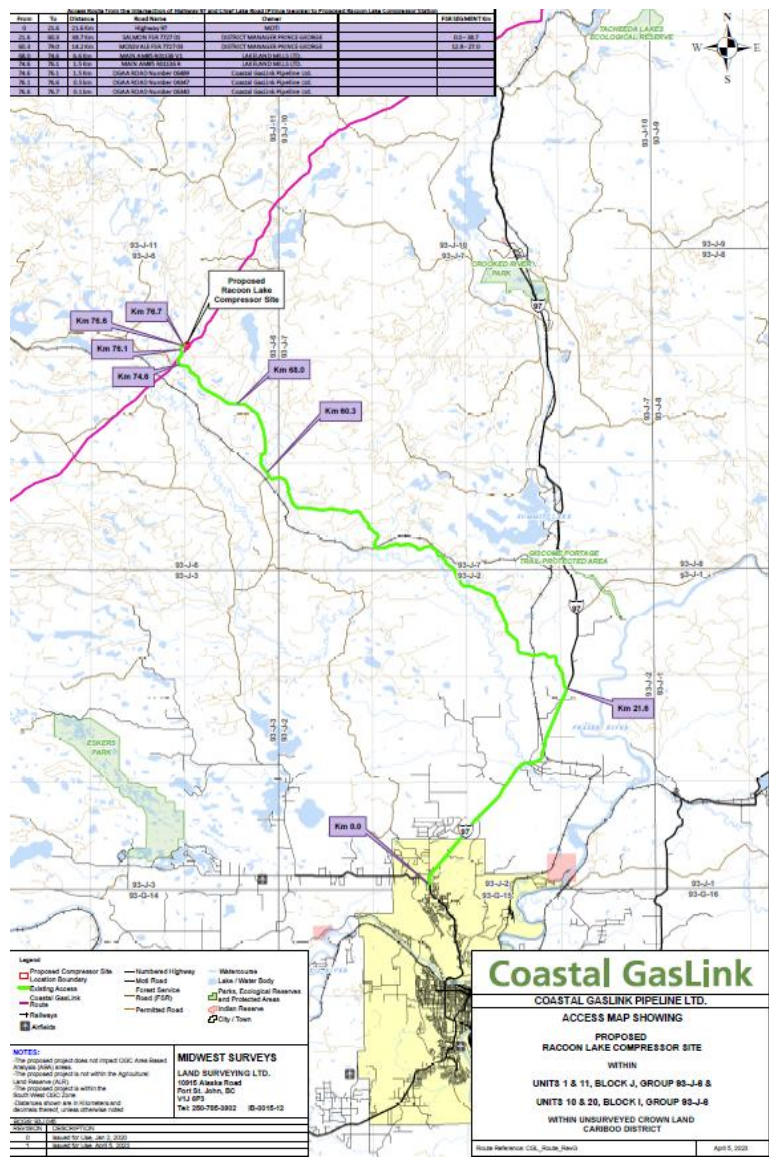
1. an additional compressor unit and additional meter runs at Wilde Lake;
2. additional equipment at the existing Kitimat Meter Station at the planned LNG Link Meter Station (located within the LNG Canada facility);
3. compressor stations at six locations located at regular intervals along 670km route

Phase 2 will double pipeline capacity *without* adding additional pipeline.





# Phase 2 - Proposed Compressor Station Location - RDFFG



# Creating a legacy of safety and respect

---

Coastal GasLink



24-HOUR EMERGENCY NUMBER

**1-888-982-7222**

**CALL OR CLICK  
BEFORE YOU DIG**



BC One-Call  
Ph. 800-474-6886  
[www.bc1c.ca](http://www.bc1c.ca)





# Thank You

Questions?