

# Enbridge regional update

---

Regional District of Fraser Fort-George

May 23, 2024



# Land acknowledgement



*Enbridge acknowledges we are gathering today on the unceded lands of the Lheidli T'enneh First Nation and that our projects and operations span Treaty and Tribal lands, the National Métis Homeland, unceded lands and the traditional territories of Indigenous Nations, Tribes, Governments and Groups (Indigenous groups)<sup>1</sup> across North America.*

<sup>1</sup> In this IRAP we are using the term "Indigenous groups" when referring to Indigenous nations, governments or groups in Canada and/or Native American Tribes and Tribal associations in the United States. We have the utmost respect for the unique rights and individual names of Indigenous groups across Turtle Island. This collective term is used solely for the purpose of the readability of the IRAP.

# Natural gas transmission in British Columbia



- Westcoast Energy Inc. (Westcoast), an Enbridge company, owns and operates the major natural gas transmission system in British Columbia (BC), referred to as the Westcoast or BC Pipeline system.
- The BC Pipeline system spans over 2,900 kilometers from near Fort Nelson in northeast BC and from Gordondale near the Alberta-BC border, south to the Canada-U.S. border at Huntingdon/Sumas.
- For almost 70 years, the gas transported by the BC Pipeline system is used to heat homes, businesses, hospitals and schools. This gas is also used for electric power generation and is a staple in a number of industrial and manufacturing processes that produce hundreds of products that improve our lives.



We help connect people with the energy they need to live their lives

# Economic impacts to BC (2023)



- Jobs

- Enbridge’s workforce included **224** BC-based permanent and temporary employees, and provisioned contractors, at year’s end.
- Enbridge paid more than **\$23.7 million** in total wages to BC-based permanent and temporary employees.

- Tax and Economic Benefits

- Enbridge paid **\$72.9 million** in property tax across BC for energy projects, pipelines and related facilities, such as compressor stations.
- Enbridge’s capital expenditures on items such as pipe steel, equipment purchases and replacement, system integrity-related investments, and capital leases, totaled **\$360 million**.

Enbridge is committed to supporting and strengthening the communities near our pipelines and facilities

# Economic impacts to BC (2023)



- Regional District of Fraser Fort-George
  - Over \$700,000 paid to the City of Prince George in the 2023 tax season.
  - Over \$11 million paid to the Regional District of Fraser-Fort George in the 2023 tax season.
- This revenue can be used for schools, infrastructure (roads and bridges), health and wellness, recreation, transportation and other services that help strengthen the fabric of the community.



Enbridge is committed to supporting and strengthening the communities near our pipelines and facilities

# Sunrise Expansion Program

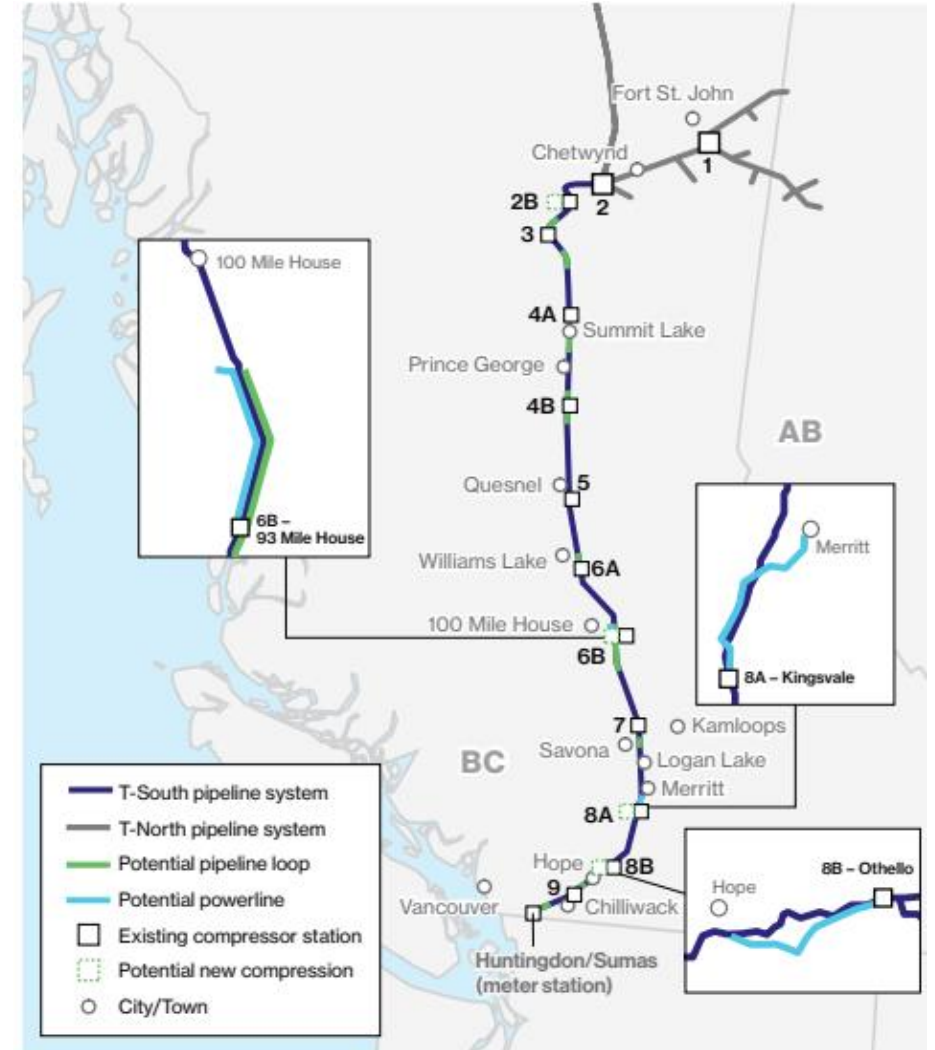


- Sunrise Expansion Program (the Project) is a proposed expansion of the southern portion of the Westcoast or BC Pipeline system known as “T-South.”
- The Project is being driven by the demand for natural gas capacity to serve BC and the U.S. Pacific Northwest.
- Includes the addition of 42-inch diameter pipeline looping and additional compression to provide approximately 300 million cubic feet per day of additional natural gas transportation service.
- Pipeline looping segments will be built along Westcoast’s existing right-of-way.

## Preliminary Project timelines

- Environmental studies began: Q2 2023
- Geotechnical studies began: Q4 2023
- Regulatory application submission (CER): Q2 2024
- Construction: Q2 2026 – Q4 2028
- In-service: Q4 2028

Project timelines are subject to change.

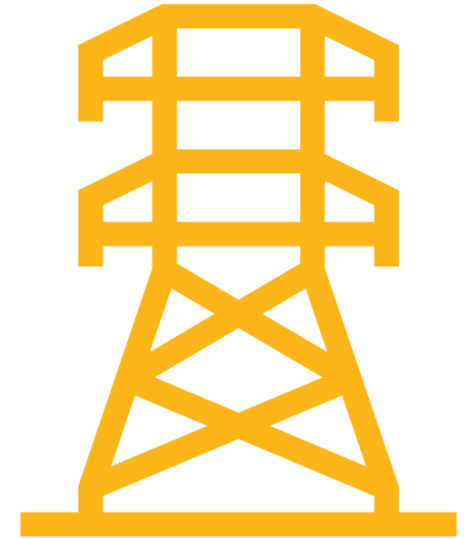


Map is for illustrative purposes only and not to scale. Project design is under development and configuration of pipeline loops, compressor units, additional compressor station modifications, and powerlines are subject to change.

# Electric compression and powerline transmission



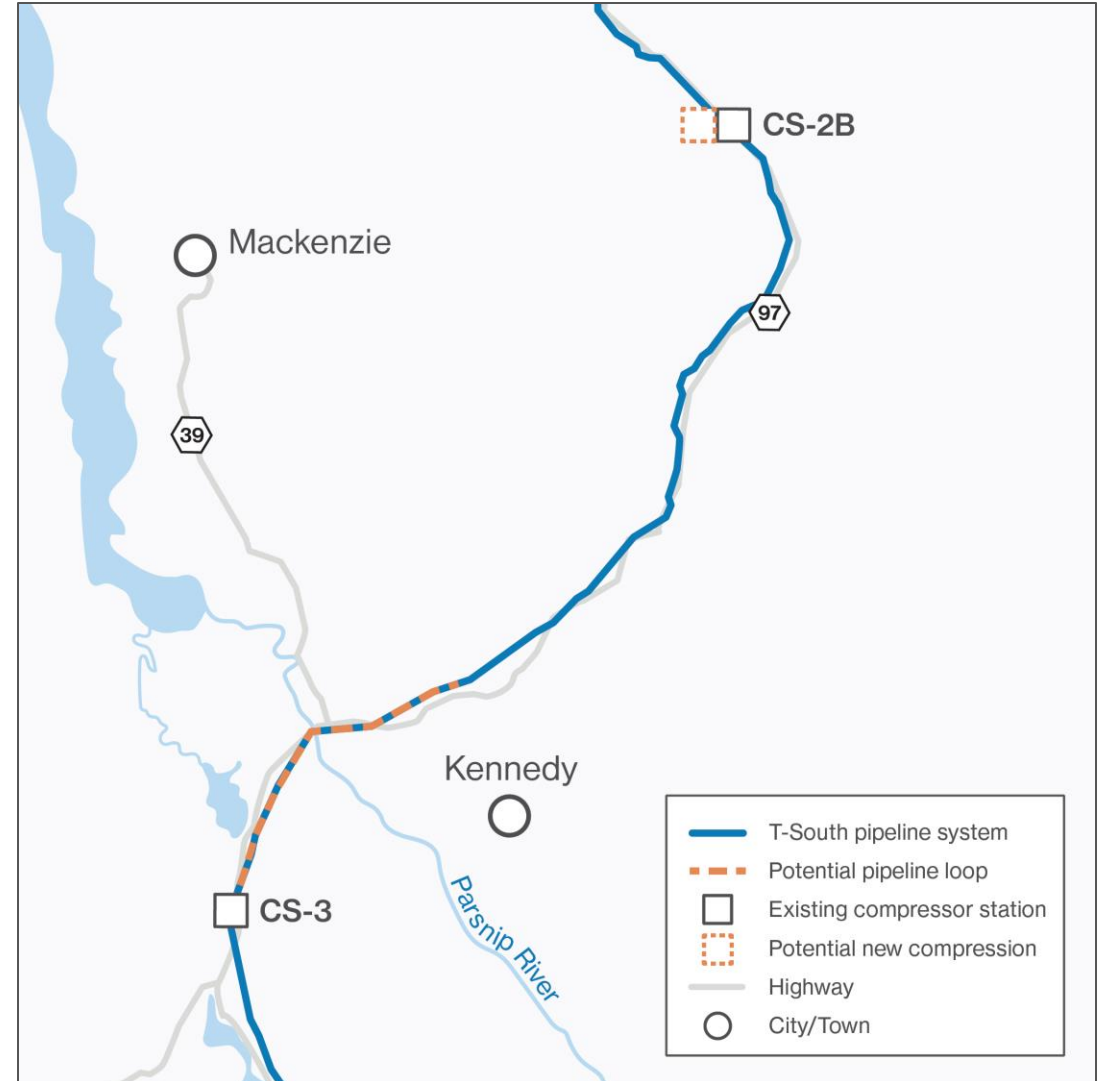
- Westcoast plans to install new compressor units at existing compressor stations located at Azouzetta Lake (CS-2B), 93 Mile (CS-6B), Kingsvale (CS-8A), and Othello (CS-8B).
- Westcoast is considering the use of electric-driven compressor units for some of the compression required for the Project.
- To power the new electric-driven compressor units and ensure reliable operations, about 34km of new electric transmission powerlines may be required.
- These overhead powerlines would largely follow existing infrastructure such as roads or ROWs to minimize environmental and local community impacts.



# Proposed Project Scope within RDFFFG

- ~ 18 km pipeline loop south of Mackenzie, west of Kennedy, north of McLeod Lake.
- A new natural gas drive compressor unit is proposed at CS-2B Azouzetta, northeast of Mackenzie.

Pipeline looping segments will be built along Westcoast's existing right-of-way





# Proposed Project Scope within RDFFFG

- ~ 13.6 km pipeline loop south of McLeod Lake.

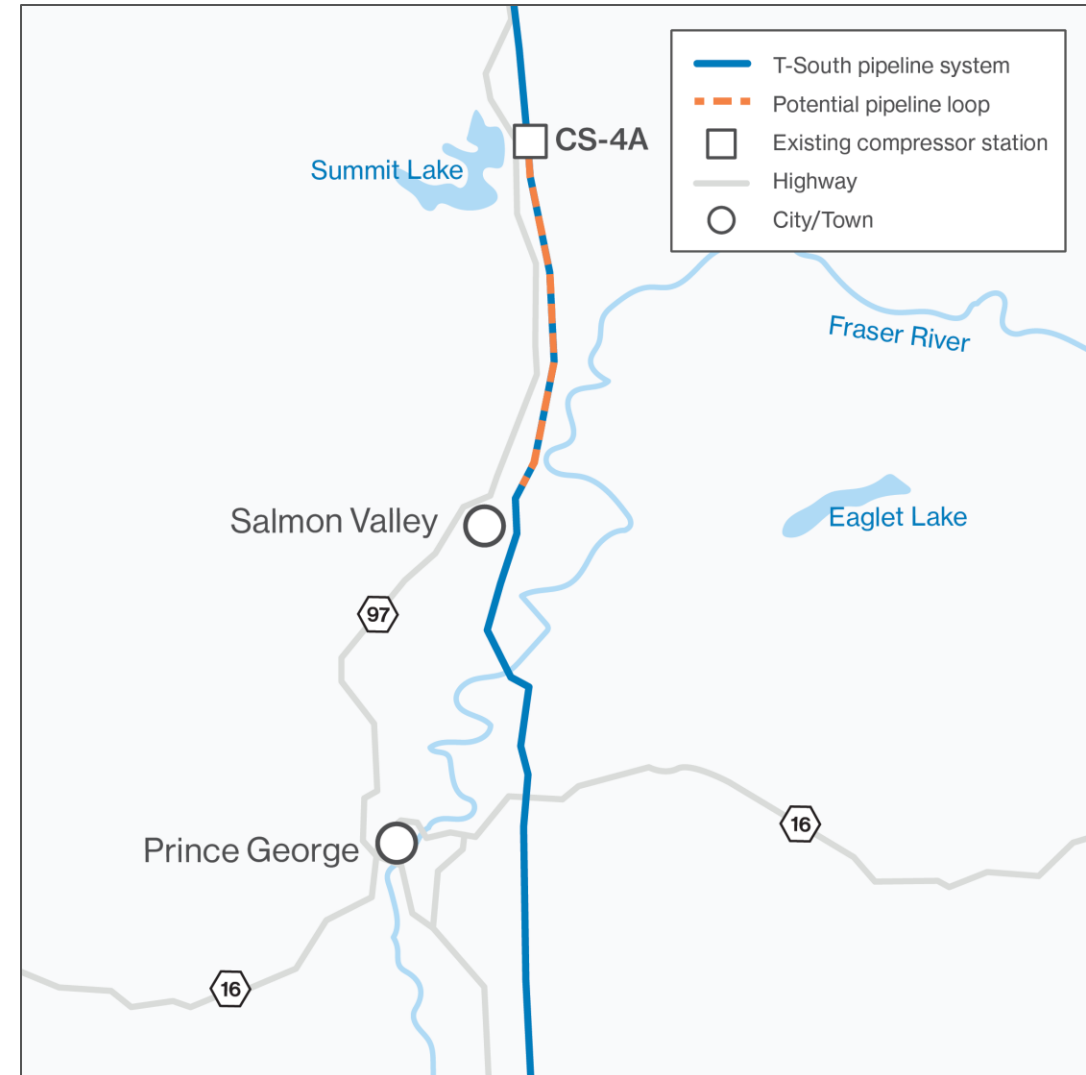
Pipeline looping segments will be built along Westcoast's existing right-of-way



# Proposed Project Scope within RDFFFG

- ~ 19.7 km pipeline loop north of Prince George and Salmon Valley, near Summit Lake.

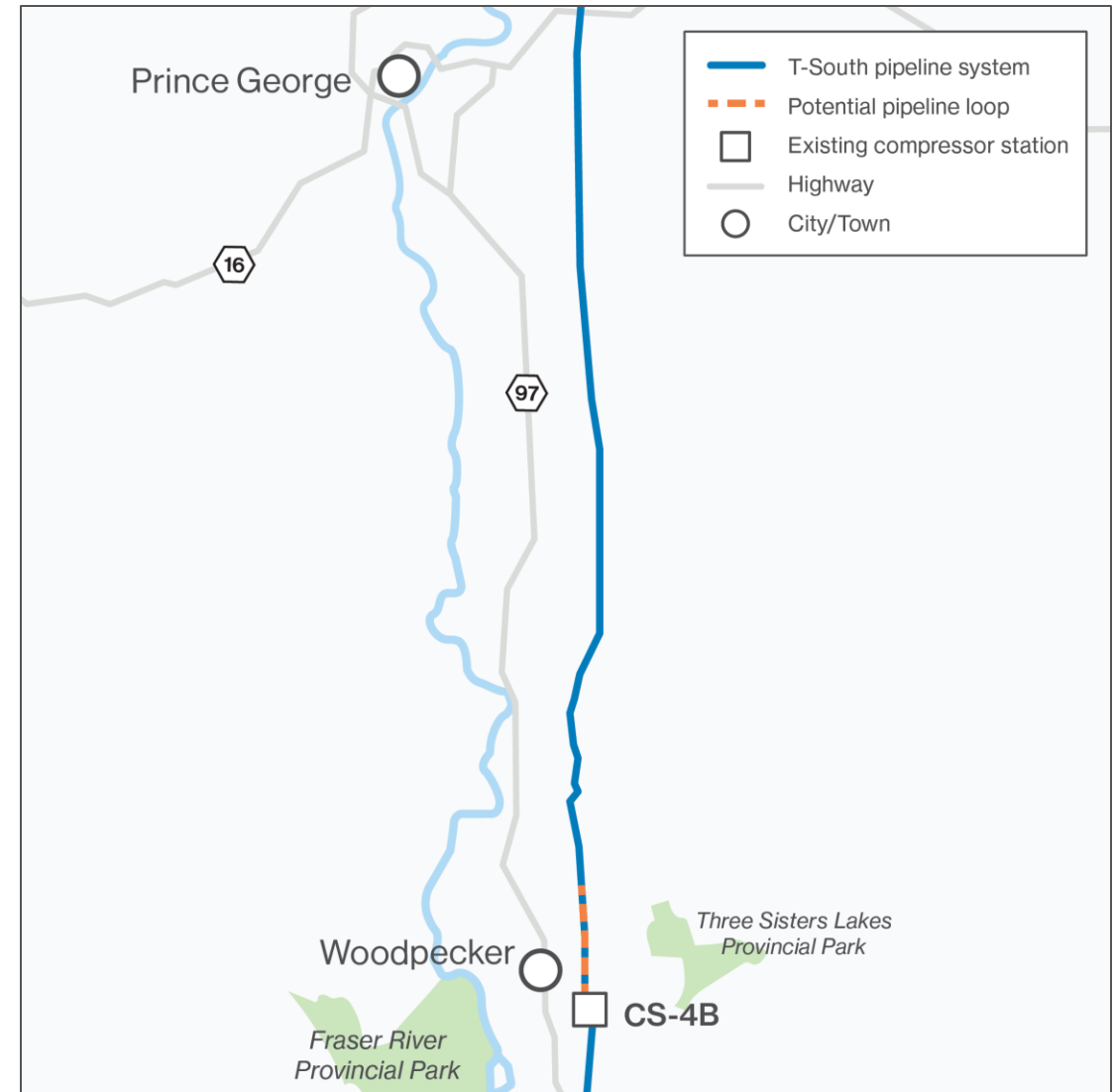
Pipeline looping segments will be built along Westcoast's existing right-of-way



# Proposed Project Scope within RDFFFG

- ~ 4.8 km pipeline loop south of Prince George, north of Hixon.

Pipeline looping segments will be built along Westcoast's existing right-of-way



# Proposed Project Scope within RDFFG



- ~ 20.9 km pipeline loop south of Hixon

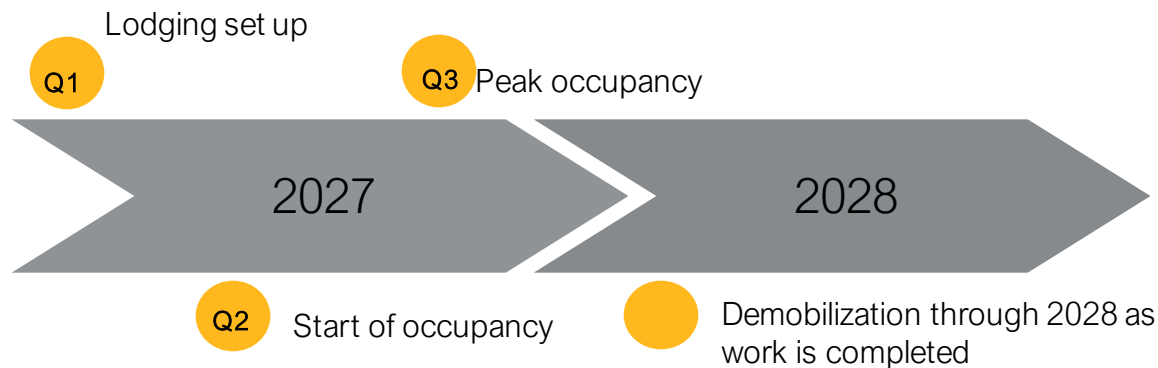
Pipeline looping segments will be built along Westcoast's existing right-of-way



# Proposed temporary workforce accommodations



- Proposed temporary workforce accommodation is being proposed in the Mackenzie/McLeod Lake area.
- Westcoast is engaging with municipalities and Indigenous groups to determine location and design, and in the development of a socio-economic management plan to minimize potential impact and maximize local benefits.
- The proposed lodging will house up to 700 workers during peak construction period.
- Approximately 22.5 acres of land is required for the temporary lodging and parking. Westcoast is reviewing industrial or previously cleared land in the region.



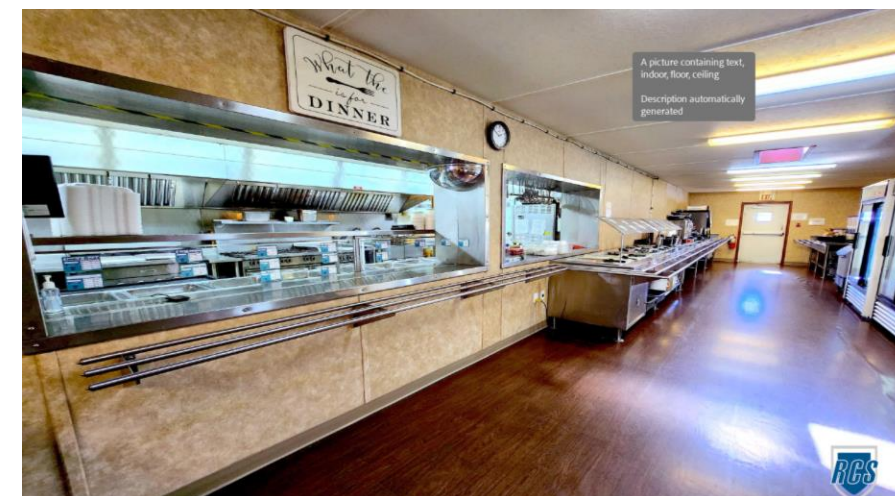
# Safety and the community

- Safety is a top priority, and that includes safety for the communities we work in.
- Westcoast workforce accommodations are treated as an extension of our workplace and must therefore follow the same values and policies of the company.
- All employees and contractors must follow strict adherence to the **Codes of Conduct Policy** and the **After Hours and Respect for the Community Policies**.
- Workers will be required to undergo training, including human trafficking prevention awareness training, cultural awareness training and workplace health and safety training.
- Westcoast is committed to protecting human rights and has zero tolerance for human rights abuses of any kind.



# Socio-economic planning

- Local communities and businesses will benefit from the Project and temporary lodging, including economic impacts from increased use of restaurants, and other businesses by workers in the area.
- Employment opportunities will be provided through our selected contractors. Local personnel and service suppliers are preferred, including Indigenous peoples and local businesses.
- Opportunities to provide services (such as cleaning, cooking, security, etc.) will be made public once the workforce lodge provider has been selected.
- The temporary lodging will have its own mobile medical units, and potentially an independent water and sewage system.
- We continue to gather input through our socio-economic effects questionnaire on our virtual open house: [www.sunrise-program.com](http://www.sunrise-program.com) or directly to our team at [BCProjects@enbridge.com](mailto:BCProjects@enbridge.com) or 1-833-267-2220.



# Socio-Economic and Gender-Based+ Analysis (GBA+)



Westcoast is seeking to obtain any additional baseline information that can support our ability to address and mitigate:

- Direct and indirect socio-economic effects.
- Effects to subgroups of the population including differential impacts to gender, sex, culture, and identity considerations.

We are seeking information related to any **key social issues in the community** (health, social and cultural well-being, employment and economy, etc.)

- Suggestions for mitigation that might reduce negative social issues, as well as any support Westcoast can offer to increase the positive social impacts in the community.



More  
information

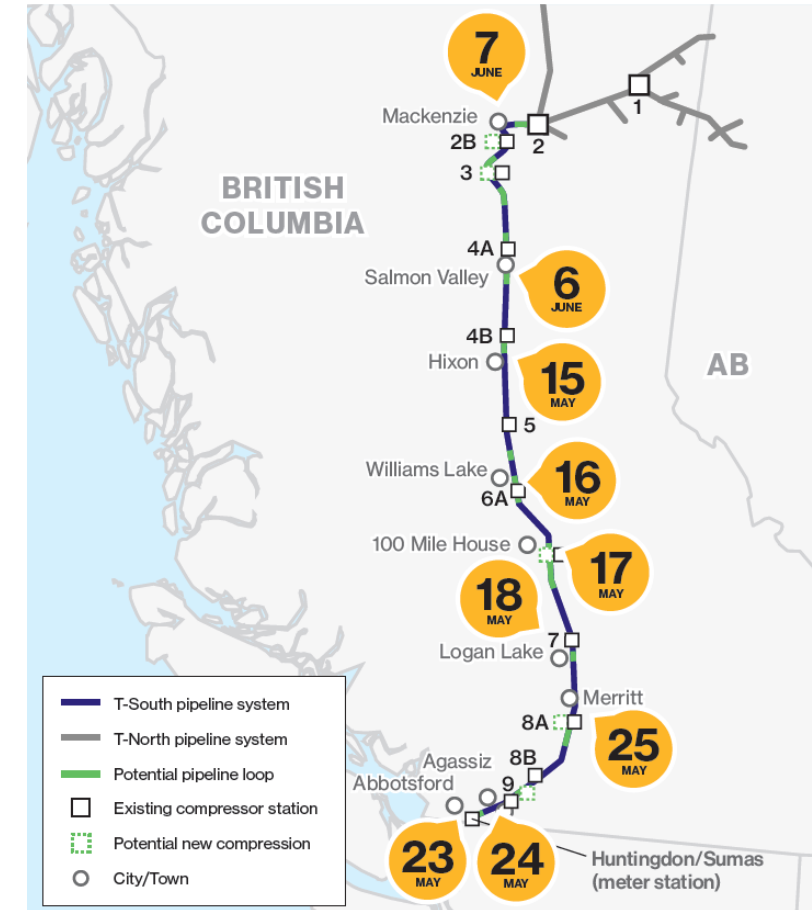
Visit our virtual open house: [www.sunrise-program.com](http://www.sunrise-program.com)



# Local Engagement



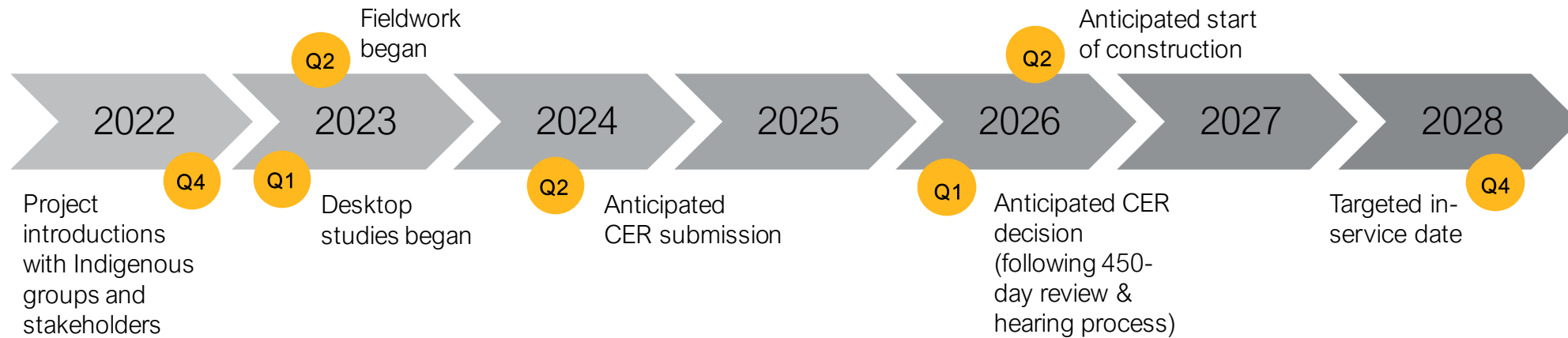
- Westcoast hosted open houses about the Project throughout BC in 2023 including in Salmon Valley/Prince George area and the District of Mackenzie.
- We heard about topics of interest related to employment and contracting opportunities, mitigation for environmental impacts, safety of communities, construction phases and timing, and ongoing community engagement.
- We've supported initiatives in the RDFFG over the last year including (not limited to):
  - Mackenzie Autumn Lodge Society: subsidized meal program for Seniors
  - Mackenzie Spring Expo
  - Prince George Chamber of Commerce – True North Conference
  - Prince George Community Foundation – Miracle Theatre
  - Prince George Council of Seniors Society – Meals on Wheels and Christmas Hampers
  - Hixon Volunteer Fire Department – Equipment for the Structural Protection Unit Trailer for Wildfire response



# Canada Energy Regulatory and the Application



- The Westcoast system is an interprovincial pipeline system regulated by the Canada Energy Regulator (CER). Before a pipeline or a facility can be built, Westcoast must file an Application with the CER.
- As part of the Application, Westcoast has been and will continue to conduct numerous environmental and engineering studies to identify potential impacts the Project may have.
- These studies have been incorporated into a comprehensive Environmental and Socio-economic Assessment (ESA) for the Project, which will be submitted with the Application later this month.



# Operations and Integrity

---

# BC Pipeline Safety Enhancements



Since the fall of 2018, Enbridge has completed a comprehensive integrity program of our natural gas pipeline system in BC as part of an improved approach to pipeline safety.

Enbridge has implemented several measures to further improve pipeline safety:

- Comprehensive assessment of the entire Transmission South (T-South) system
- 3<sup>rd</sup> party assessment of our integrity program
- Restructured our gas business and established a dedicated pipeline integrity team
- Employed the latest technology and data innovations.
- Developed and implemented an enhanced pipeline inspection program.



# Safety 24/7/365



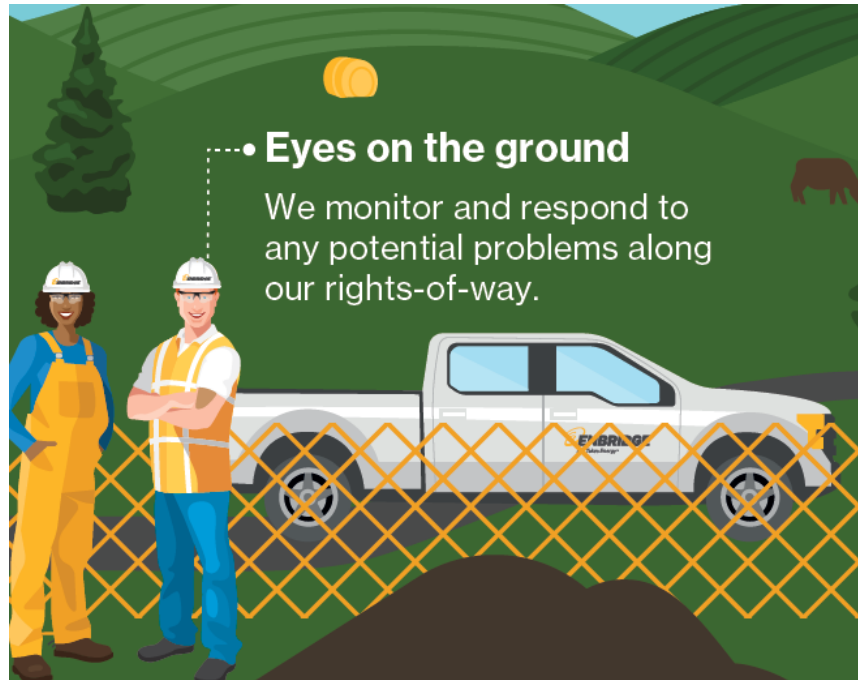
## • Eyes in the sky

We regularly survey all 27,500 km of our pipeline rights-of-way, including the 2,953 km of our BC Pipeline natural gas transmission system. We also use satellite imagery to help identify, monitor and address any instances of incremental slope movement.



## Prevention practices

- Aerial patrols
- Public awareness programs and emergency preparedness
- Community engagement



## • Eyes on the ground

We monitor and respond to any potential problems along our rights-of-way.

## • Talking to our neighbours

We regularly communicate with neighbours and customers about how to stay safe around our pipelines and facilities.



# Contact Us

---

## Email

BCprojects@enbridge.com

## Phone

1-833-267-2220 (toll-free)

## Mail

Enbridge Inc.  
3985 22 Ave  
Prince George, BC V2N 1B7



